

LA Canon

For as many players as possible, each with one cymbal, gong, or tam-tam played with soft mallets. All cymbals, gongs, and tam-tams should be allowed to ring freely throughout, never being dampened.

Players should be as spread out as possible within the space, surrounding the audience or interspersed among them.

Each letter (A-L) is a type of canon related to A.

The first player plays the entirety of A, and then plays through the other canons in any order, playing each once.

Once the first player begins, all other players can begin at any time, playing all the canons in any order but playing each once.

Each player will need a stopwatch that can be started and stopped silently.

Each player starts his stopwatch once he/she starts playing.

Once a player reaches the end of a canon, he/she should reset his/her stopwatch and immediately begin at zero for the next canon.

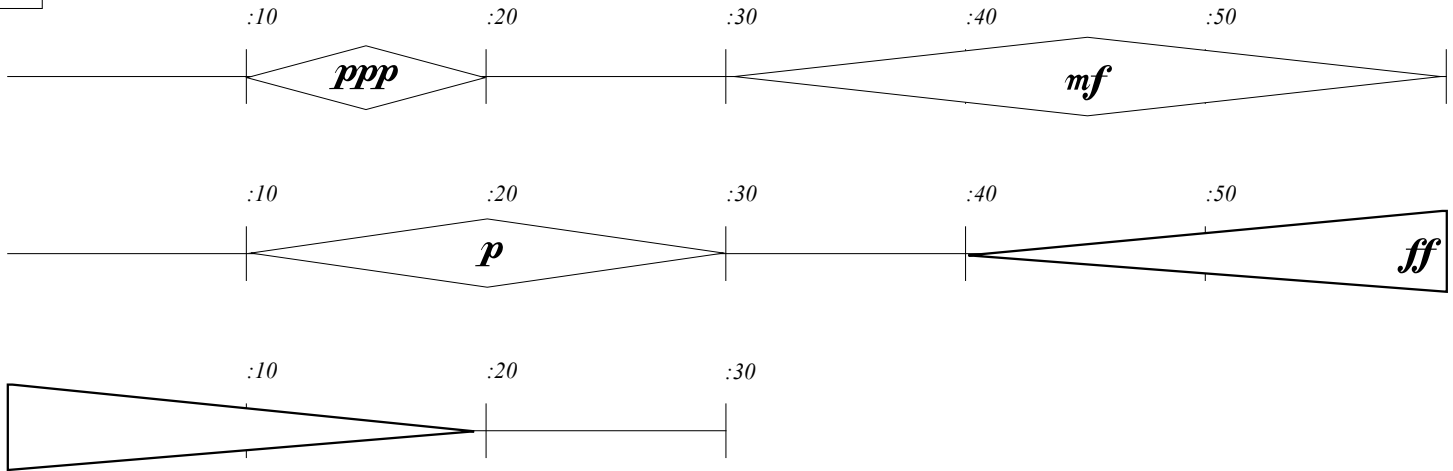
Thus, there will be some extra time between canons for each player. Try to make these as short as possible.

The rhombus shapes are to be played as cymbal rolls with mallets. They start at *niente* and crescendo to the indicated dynamic before returning to *niente*.

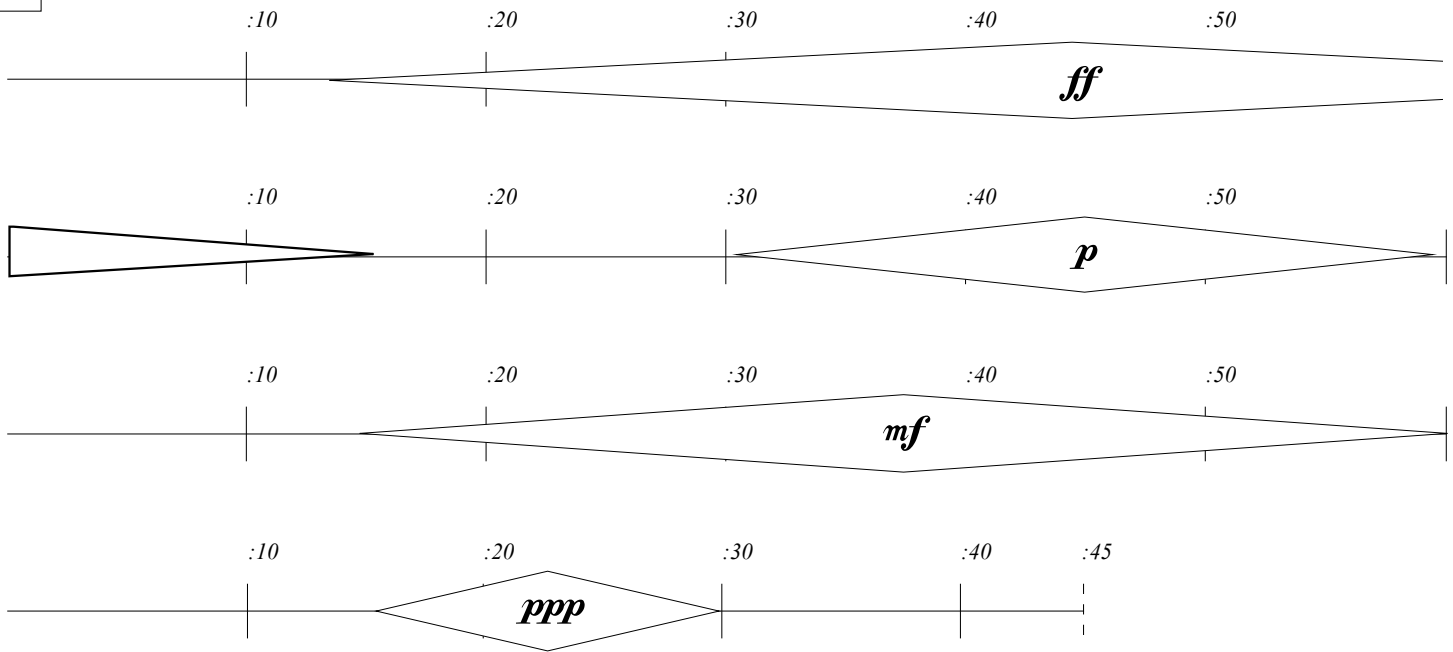
Please note that some of these extend across two systems.

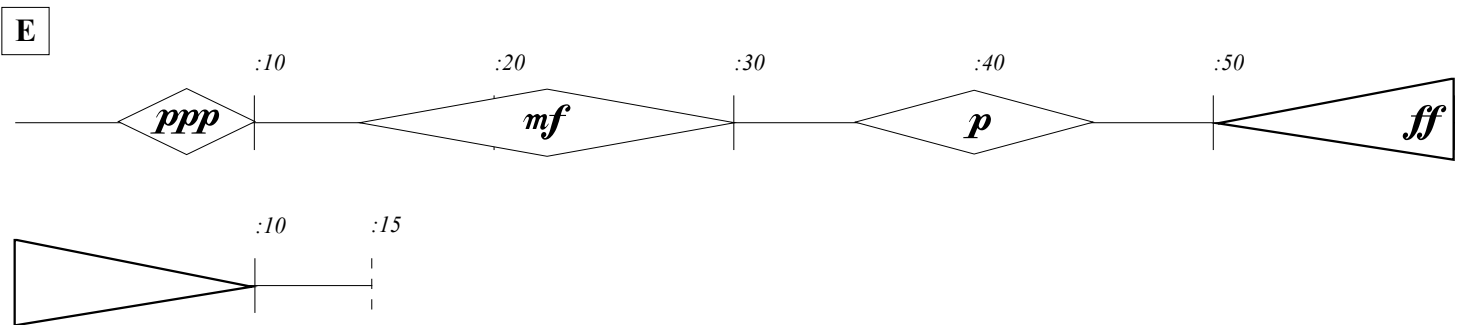
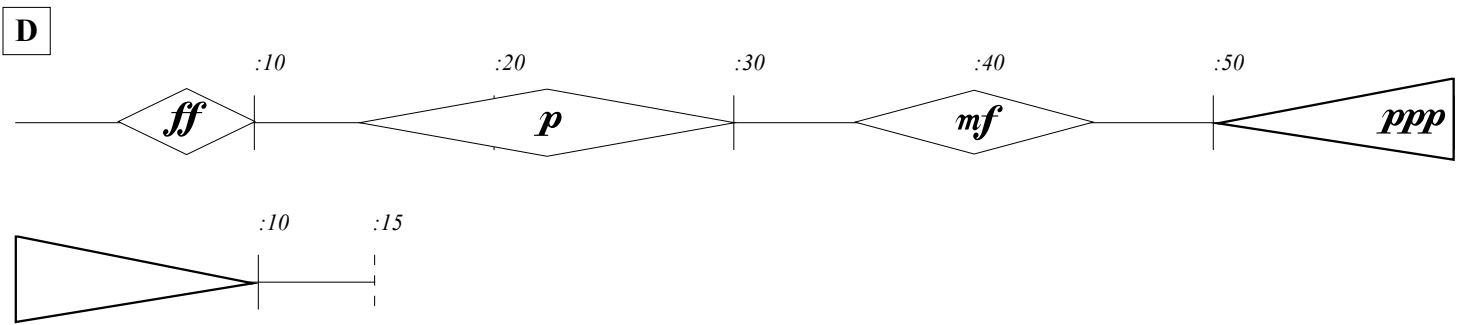
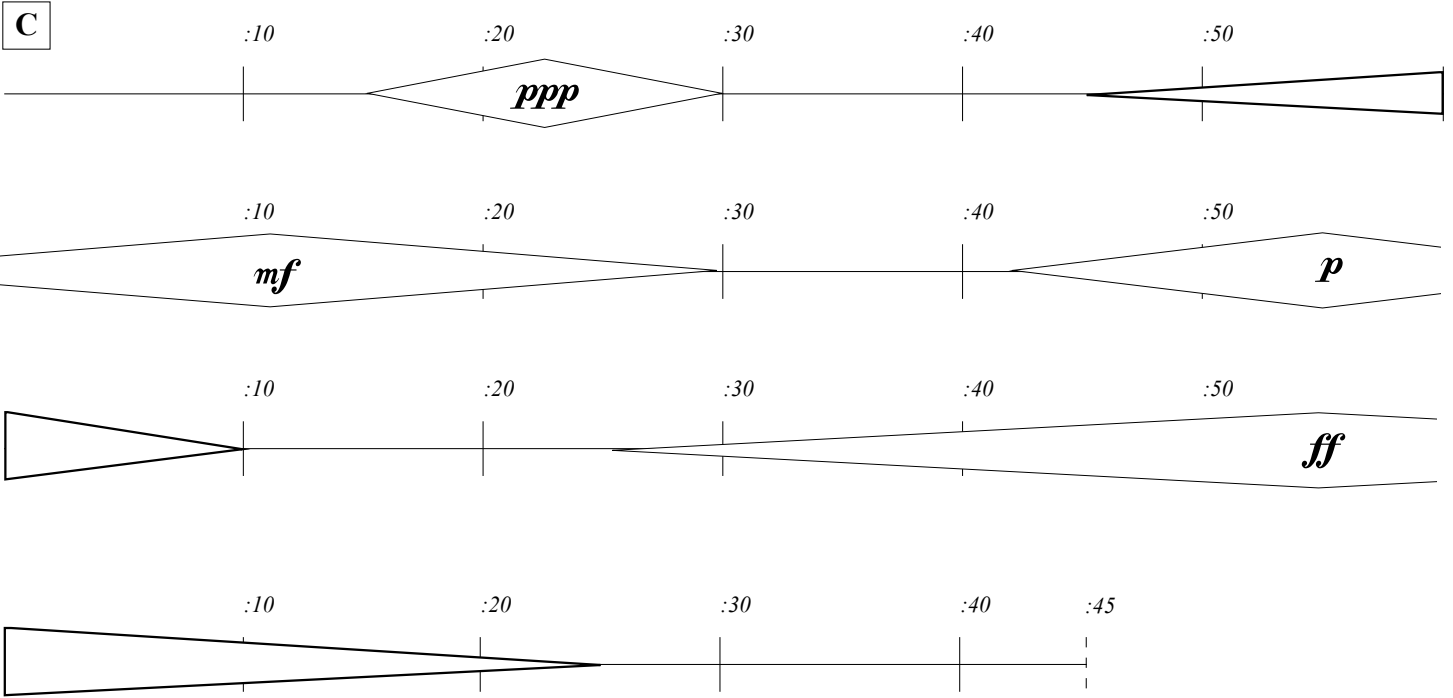
The written music totals 30 minutes, though the actual length will depend on how long each player waits to begin and how much time is spent switching from one canon to the next.

A

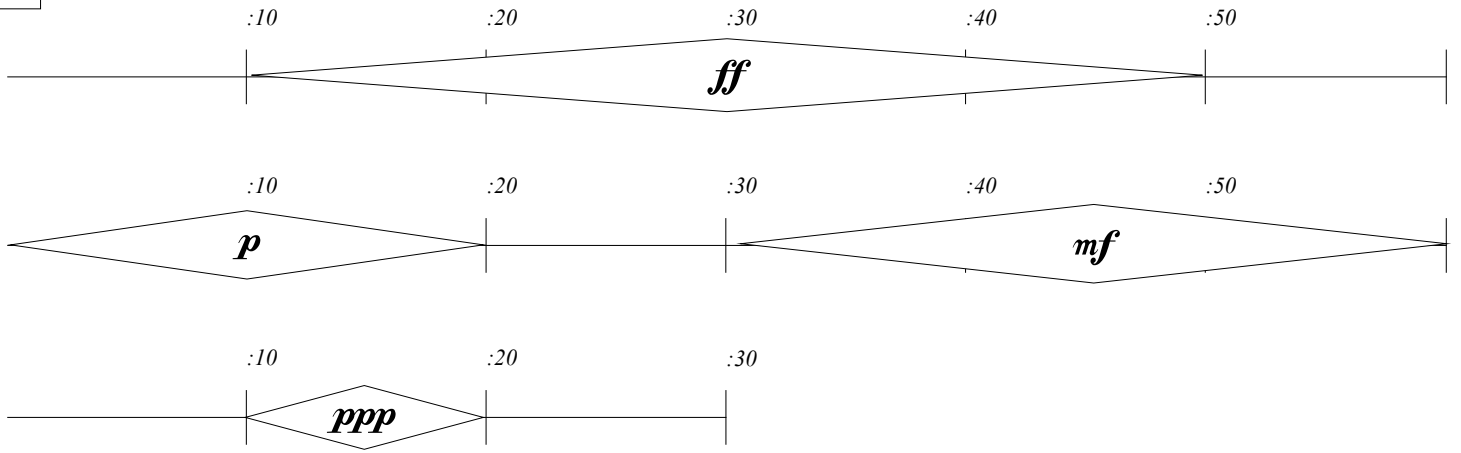


B

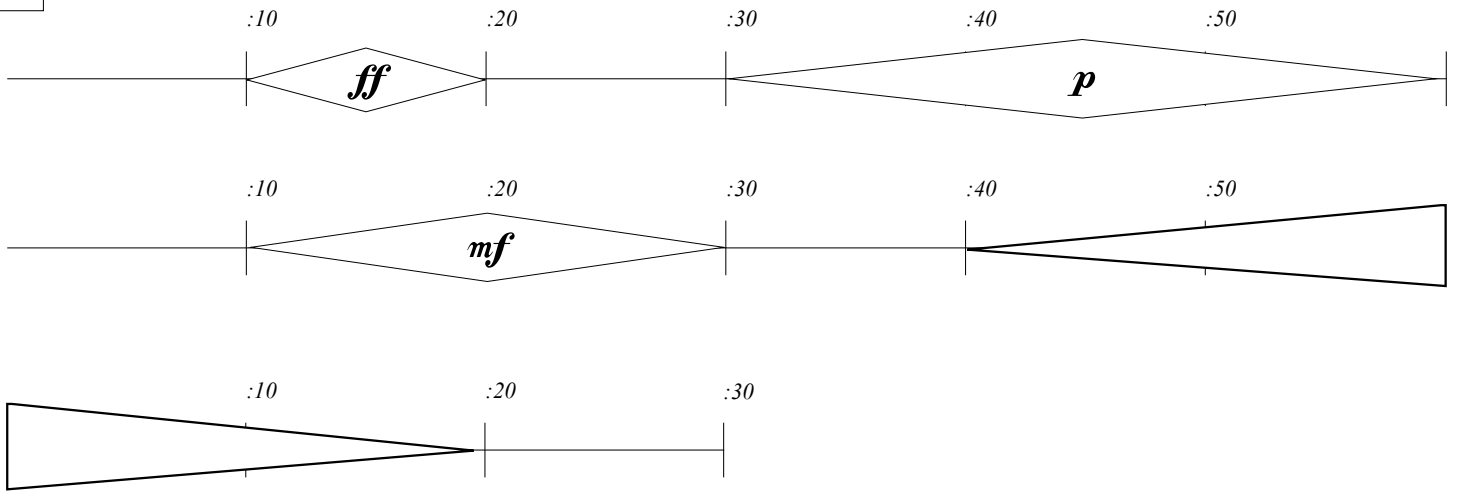




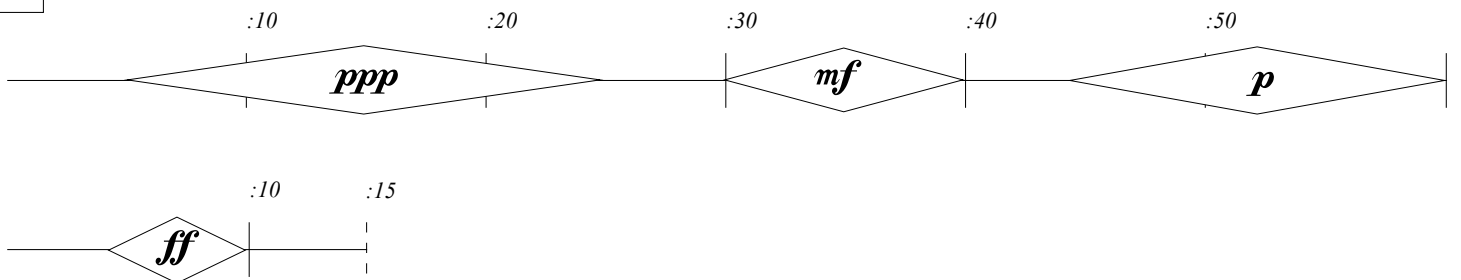
F



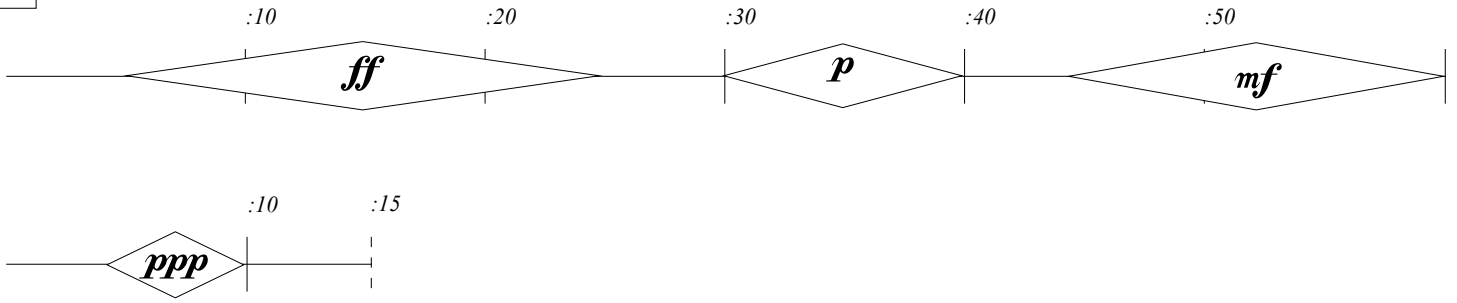
G



H



I



J

